

LOGIQ 500 PRO Series Digital Ultrasound Console

Features:

- B, M, PWD, CWD, Color Flow modes,
- Automatic Tissue Optimization (ATO),
 - Tissue Harmonic Imaging,
- support for Active Matrix Array (AMA) Technology,
 - Pulsatile Flow Detection (PFD),
 - Adaptive Color Enhancement (ACE),
- Micron Imaging, MR Ultrasound, MR Flow,
 - Directional Power Doppler Imaging,
 - Advanced Velocity Mode,
- Basic OB Calculations, Basic and Advanced Vascular Calculations,
 - Real Time Doppler Calculations,
 - Automatic Dynamic Software Menu Display,
 - Digital Beam Former, Dual Beam Forming,
- Up to 160 Frames CINE Scroll Memory, and Image Archive.

Includes:

- Full Alphanumeric Keyboard (Hard Key),
- 15 in. Color Monitor with Swivel/Tilt/Rotate/Height Adjust,
 - Three Active Probe Ports,
- Magnetic Optical Disk Drive (MOD) and Hard Disk Drive (HDD),

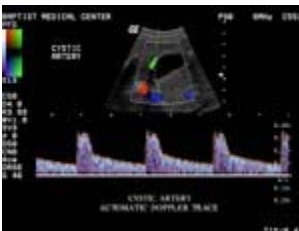


LOGIQ 500 PRO Series Premium Digital Ultrasound

Distinguished by excellent image quality, ease of use and advanced applications, the LOGIQ 500 PRO Series is designed to address the need for diagnostic confidence, cost-efficiency and long-term investment protection.

PROfessionalism:
Helps ensure diagnostic confidence

- High Frequency Micron Imaging
- Digital Beamformer with Parallel Processing
- Doppler Sensitivity
- Maximum Resolution Flow



By means of parallel signal processing, the Digital Beamformer provides true Triplex Real Time Mode, i.e. a simultaneous display of 2D Color Mode and Spectral Doppler.

PROductivity:
Maximizes patient throughput

- Automatic Tissue Optimization
- Adaptive, programmable user-interface
- Image management
- DICOM
- Triplex Imaging
- Real-time Doppler Auto Calcs
- Adaptive Color Enhancement



Migrating technology, Automatic Tissue Optimization provides excellent image quality with the touch of one button.

PROgress:

Key to Tomorrow

- Active Matrix Array transducers
- Pulsatile Flow Doppler
- Integrated 3D View
- Tissue Harmonic Imaging
- GE commitment to continuing breakthroughs



Using Pulsatile Flow Detection (PFD), you can differentiate between pulsatile flow in the Liver arteries (green) and non-pulsatile flow in the Portal vein at one glance.

For more information call 1-866-4-ENCORE